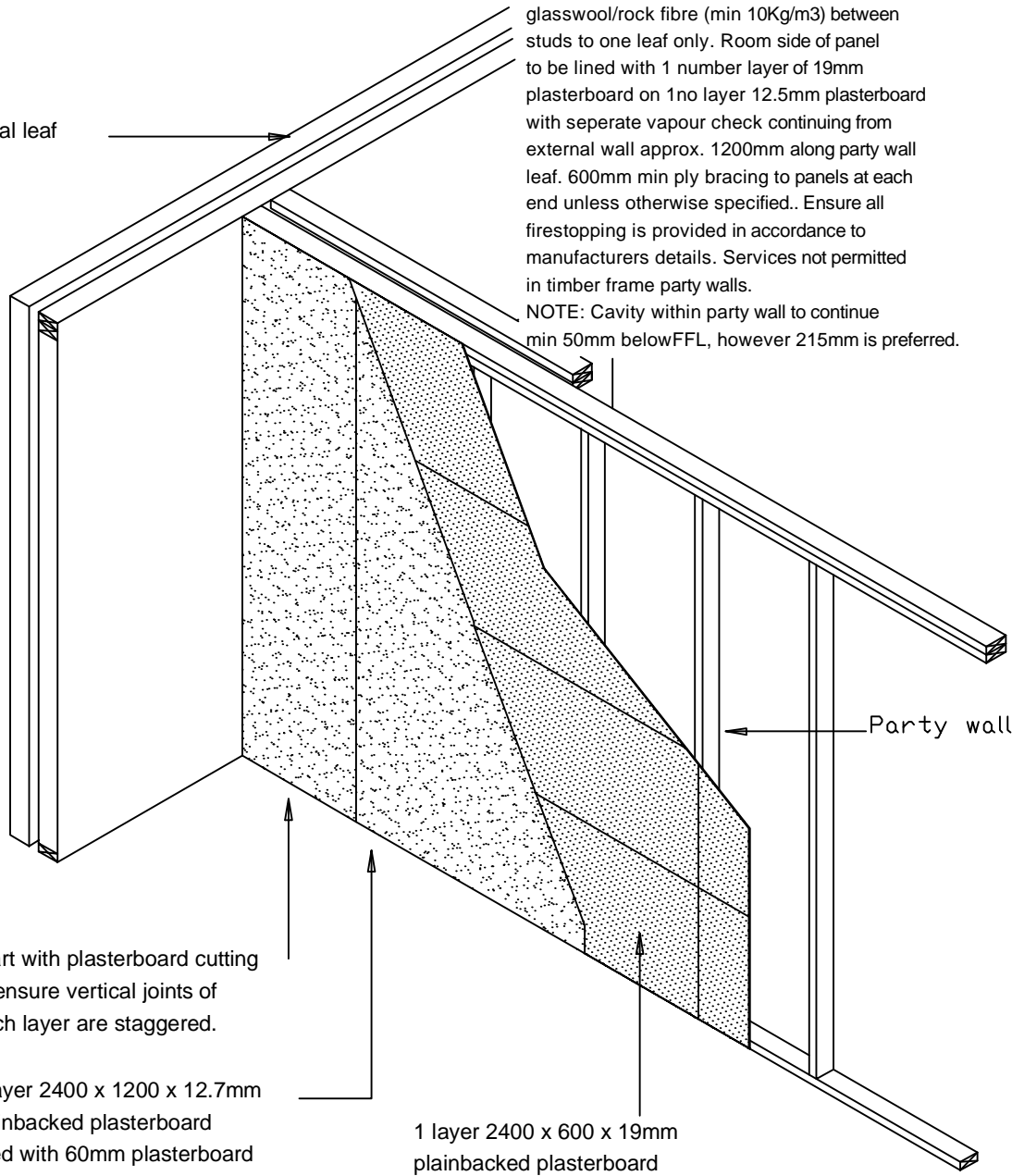


External leaf

PARTY WALLS.

2 number panels 90 x 38 studs at 400-600mm centres with 70mm cavity between studs. 90mm glasswool/rock fibre (min 10Kg/m3) between studs to one leaf only. Room side of panel to be lined with 1 number layer of 19mm plasterboard on 1no layer 12.5mm plasterboard with separate vapour check continuing from external wall approx. 1200mm along party wall leaf. 600mm min ply bracing to panels at each end unless otherwise specified.. Ensure all firestopping is provided in accordance to manufacturers details. Services not permitted in timber frame party walls.

NOTE: Cavity within party wall to continue min 50mm below FFL, however 215mm is preferred.



Party wall

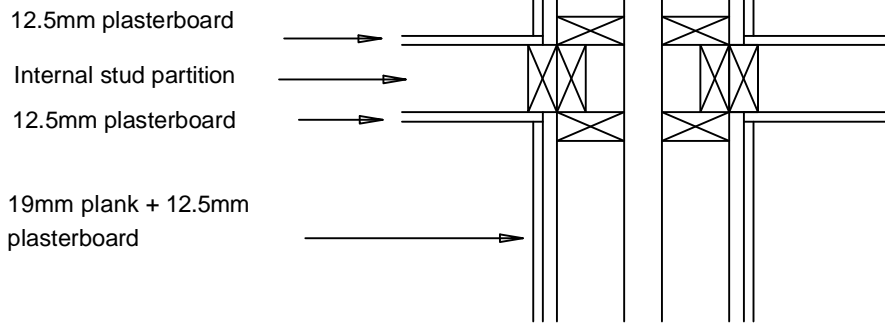
Start with plasterboard cutting to ensure vertical joints of each layer are staggered.

1 layer 2400 x 1200 x 12.7mm plainbacked plasterboard fixed with 60mm plasterboard nails @150 centres with all joints timber backed

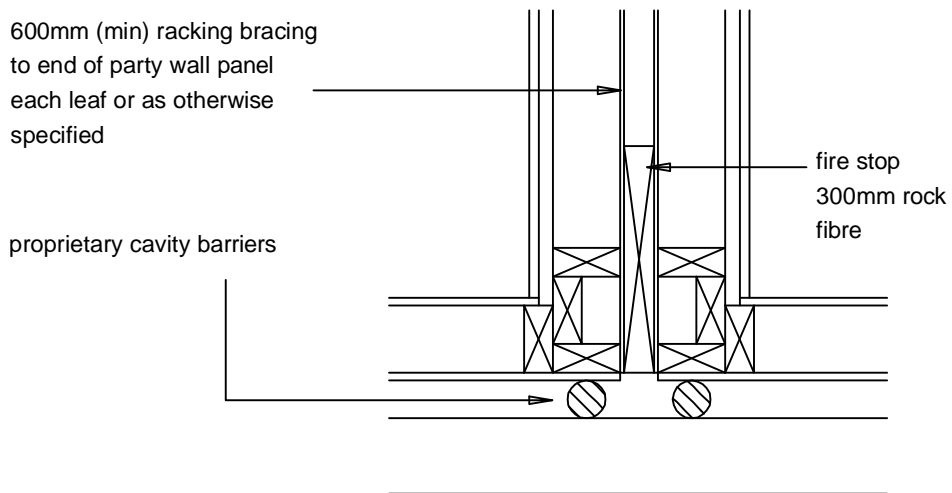
1 layer 2400 x 600 x 19mm plainbacked plasterboard plank fixed long edge horizontal with 60mm plasterboard nails @150ctr

PLASTERBOARD FIXING

Timber frame wall- 38 x 90 studs
@ 400-600 ctrs. with 9mm plywood
/ OSB sheathing.

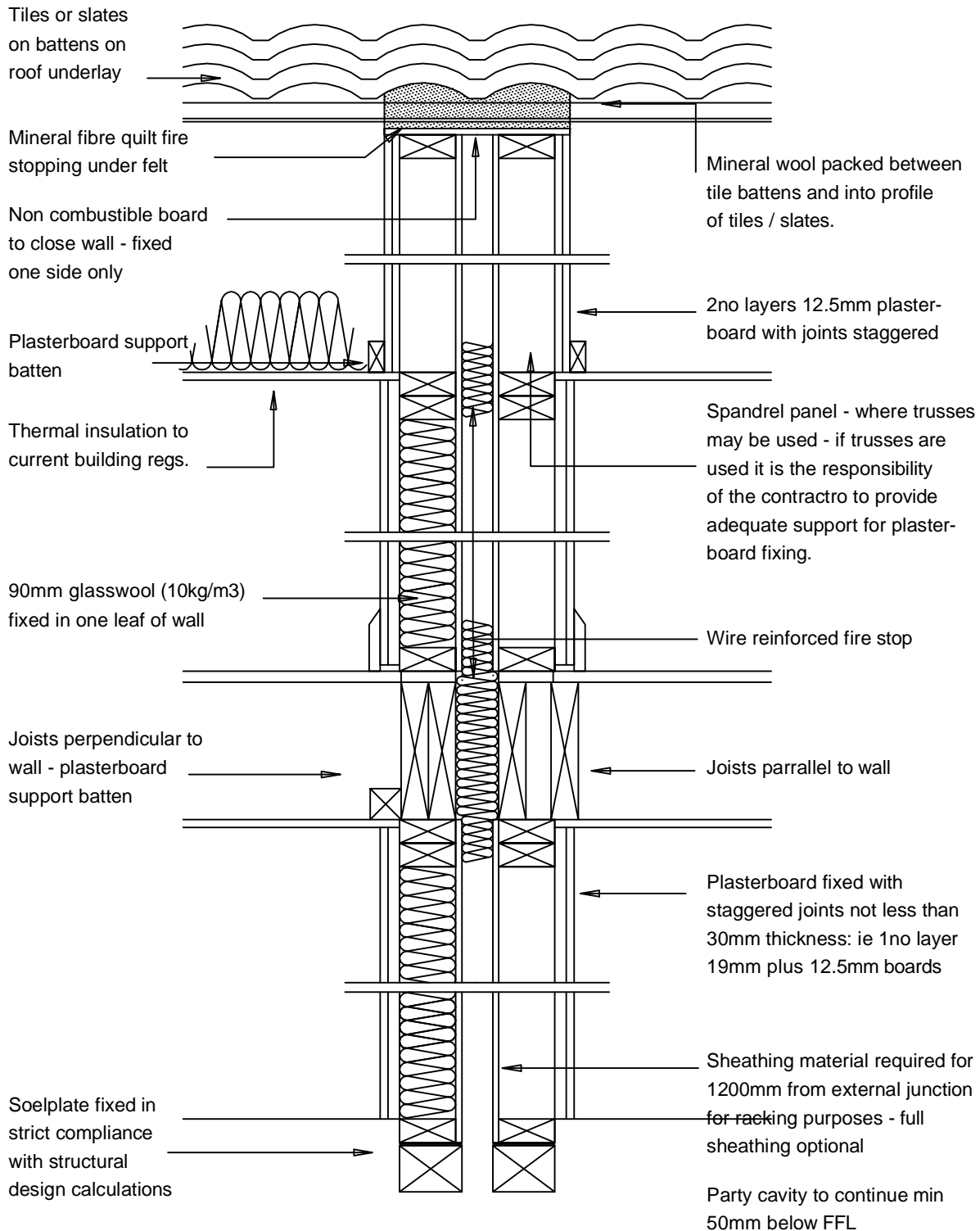


Detail A
Horizontal section at party wall & internal partition junction



Detail B
Horizontal section at party wall & external wall junction

PLASTERBOARD FIXING SUPPORTS



TYPICAL SECTION THROUGH TIMBER FRAME PARTY WALL

rock fibre quilt laid down to edge of wall and the edges tucked down between rafters

Lengths of quilt laid between battens fixed in place

rock fibre infill between rafters

Non combustible board to close wall - fixed one side only

fascia board

non combustible board to each party wall rafter

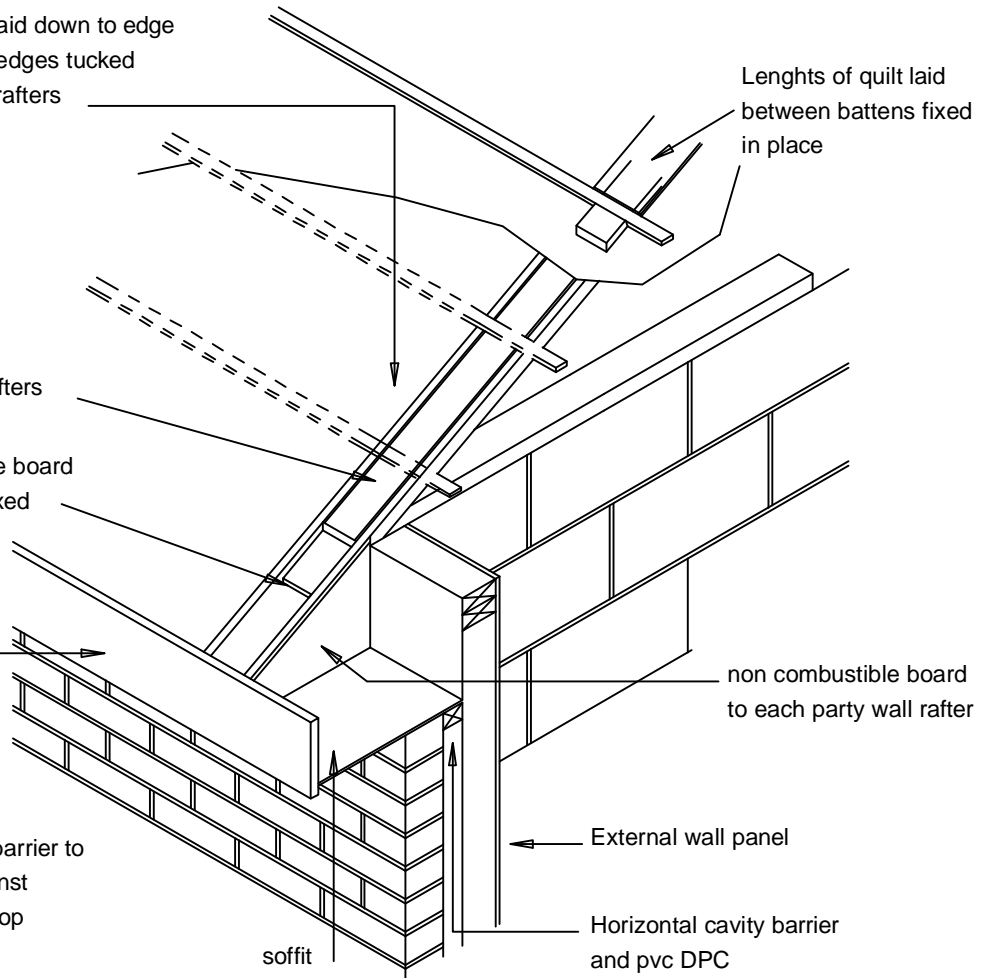
Vertical cavity barrier to butt tightly against horizontal firestop

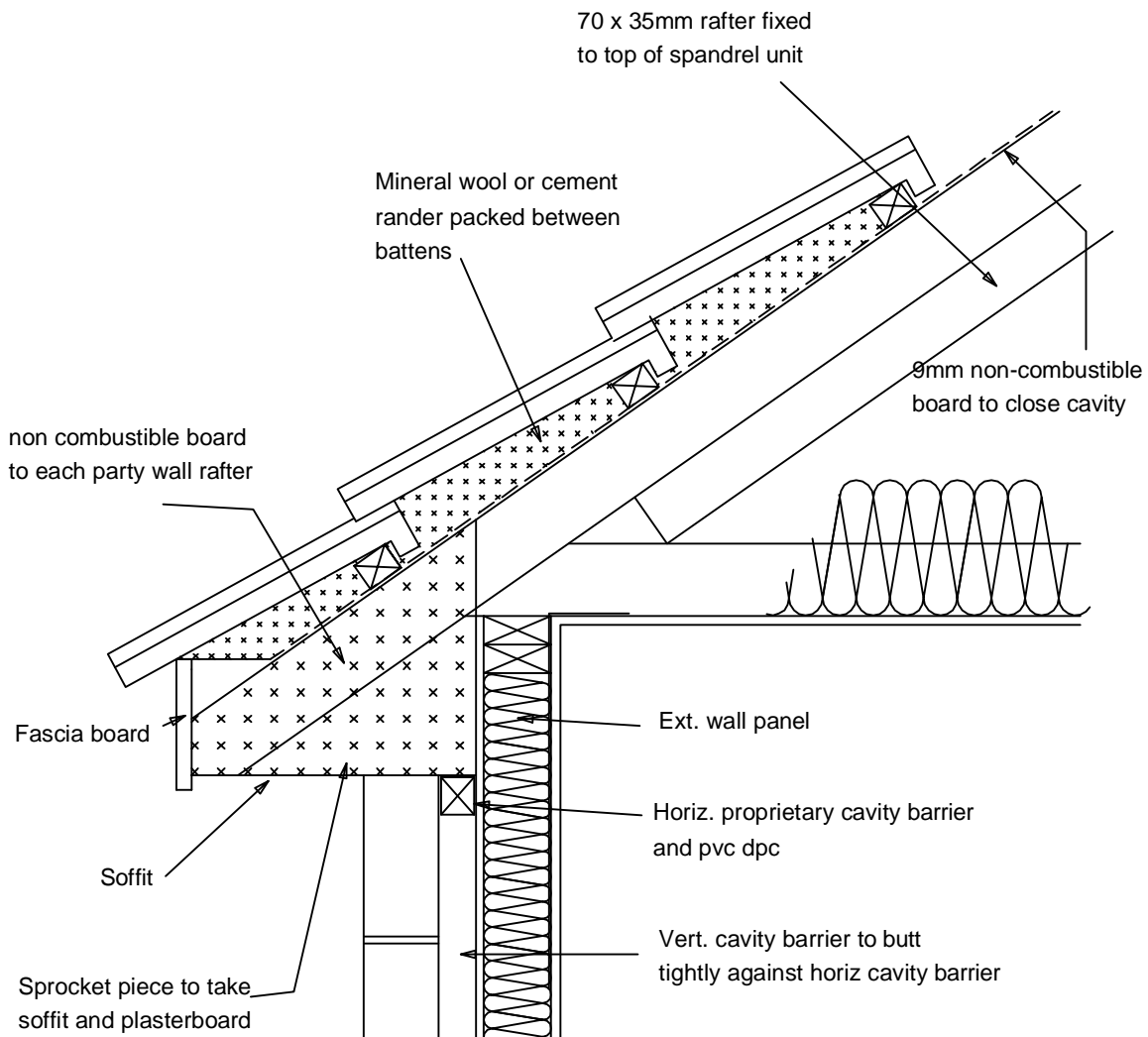
External wall panel

soffit

Horizontal cavity barrier and pvc DPC

PARTY WALL - ROOF / WALL JUNCTION





SECTION - PARTY WALL EAVES

refer to standard eaves detail for vapour barrier etc